

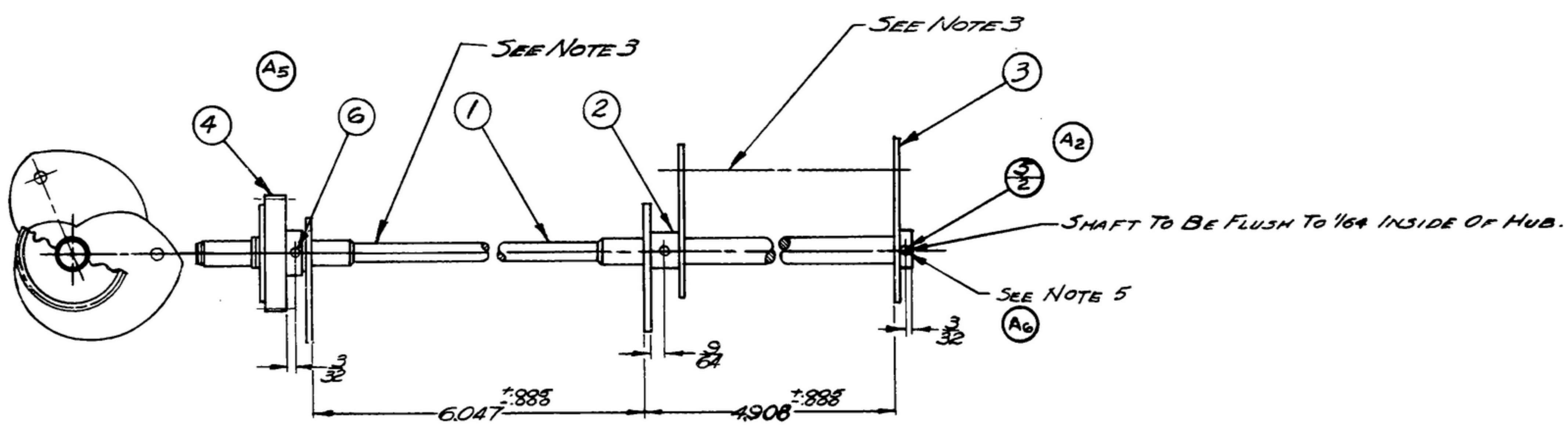
NOTICE: WHEN GOVERNMENT DRAWINGS, SPECIFICATIONS, OR OTHER DATA ARE USED FOR ANY PURPOSE OTHER THAN IN CONNECTION WITH A DEFINITELY RELATED GOVERNMENT PROCUREMENT OPERATION, THE UNITED STATES GOVERNMENT THEREBY INCURS NO RESPONSIBILITY FOR ANY SUCH USES WHATSOEVER; AND THE FACT THAT THE GOVERNMENT HAS FORMULATED, FURNISHED, OR IN ANY WAY SUPPLIED THE SAID DRAWINGS, SPECIFICATIONS, OR OTHER DATA IS NOT TO BE REGARDED BY IMPLICATION OR OTHERWISE AS IN ANY MANNER LICENSING THE HOLDER OR ANY OTHER PERSON OR CORPORATION, OR CONFERRING ANY RIGHTS OR PERMISSION TO MANUFACTURE, USE, OR SELL ANY PATENTED INVENTIONS THAT MAY IN ANY WAY BE RELATED THERETO.

THIS DOCUMENT HAS BEEN PURCHASED BY THE GOVERNMENT AND MAY BE REPRODUCED AND USED IN CONNECTION WITH ANY GOVERNMENT PROCUREMENT OR MAINTENANCE OPERATION.

\* FOR INFORMATION ONLY. CONTRACTOR MAY AT HIS OPTION DEVIATE FROM THESE PROCESS DETAILS.

\* S.W.E. APPROVAL  
SYM PR 10042-5

REVISIONS			
SYM	DESCRIPTION	DATE	APPROVAL
A <sub>1</sub>	ADDED ITEM 6;		42428-PC-59
A <sub>2</sub>	ITEM 5 WAS 3 REQ & 105-25-603		-A1-51
A <sub>3</sub>	REMOVED NOTE 2 (ASSY OF TAPER PIN).	9 OCT 59	
A <sub>4</sub>	ADDED APPL SM-D-343600;		
A <sub>5</sub>	RELOCATED CALLOUT;		
A <sub>6</sub>	"SEE NOTES" WAS TAPER PIN NOTATION		REV. D PME



- NOTES: (A<sub>3</sub>)
1. POSITION CAM ASSEMBLY ON SHAFT AS SHOWN.
  - 2.
  3. CAM'S MUST BE ALIGNED WITHIN 0°30'.
  4. IN ALL SPLIT BALLOONS TOP FIGURE IS MATERIAL LIST ITEM INDICATOR & BOTTOM FIGURE IS QUANTITY
  5. DRILL .078 ±.003 HOLE THRU HUB AND SHAFT. ASSEMBLE PIN (6) PIN RIGID IN HUB (4). ASSEMBLE PINS (5) LOOSELY IN CAMS (2 & 3).

COLLINE PART NO.	ITEM	REQD	PART NO.	DESCRIPTION	MATL	MATL SPEC
(A <sub>1</sub> )	6	1	MS 1714 66	PIN-SPRING		
(A <sub>2</sub> )	5	2	MS 1714 64	PIN-SPRING		
SA	4	1	SM-B-249146	GEAR ASSY		
SA	3	1	SM-C-248971	CAM ASSY-RF		
SA	2	1	SM-B-248954	CAM ASSY-RF		
	1	1	SM-C-248923	SHAFT-CAM		

LIST OF MATERIAL - GOLLINS PART NO. 558 0324 004

(A <sub>4</sub> ) GOLLINS NO. 558 0324 004 QTY 1 APPLICATION	SM-D-343600		
	SM-D-248975	SC-D-248775	
DRAWN JENNETT CHECKED [Signature] APPROVED [Signature]		GOLLINS RADIO CO. 14214 PH 51-93 SIGNAL CORPS REVIEWED PME APPROVED HLY DATE 28 DEC 55	
UNLESS OTHERWISE SPECIFIED: DECIMAL DIMENSIONS INCLUDING HOLE SIZES MAY VARY ±.005 FRACTIONAL DIMENSIONS INCLUDING HOLE SIZES MAY VARY ±1/64 MACHINED ANGLES MAY VARY ±1° SHEARED ANGLES MAY VARY ±.25° BROKEN ANGLES MAY VARY ±1° ECCENTRICITY BETWEEN ANY DIAMETERS ON THE SAME CENTERLINE SHALL NOT EXCEED .010 TOTAL INDICATOR READING. ALL DIMENSIONS ARE FINISH DIMENSIONS INCLUDING APPLIED FINISH AND ARE GIVEN IN INCHES			
DEPARTMENT OF THE ARMY SIGNAL CORPS ENGINEERING LABORATORIES FORT MONMOUTH NEW JERSEY		SHAFT ASSY-CAM SM-C-248959	